

Better Homes & Gardens

Chill Out

WARM WEATHER
IS COMING.
117 WAYS TO GET
READY

**THE FLAVOR
GUIDE**
SOMETHING
FOR EVERY
TASTE
p. 98

**EASY
ICE CREAM
RECIPES
YOU CAN'T
RESIST**
p. 134

Celebrate

***Mom!* BRUNCH IDEAS AND PRETTY HANDMADE GIFTS**

RIGHT-SIZED

This updated bungalow has no space to spare, but a consistent palette and luxury surfaces (in small amounts) make the most of every inch.



WALL
COLLINGWOOD
859
BENJAMIN
MOORE

Interior designer Lindsay Chambers chose a calming color scheme of shades of gray with warm brown and purple undertones. The 120-square-foot living room called for petite furnishings, like the sculptural, low-slung leather club chairs.



for the record

■ THE HOMEOWNERS

Tech executives Heidi Holter and Kathleen Curry, plus golden retriever Huckleberry.

■ THE HOUSE

A 1905 bungalow in Palo Alto, CA. When Heidi and Kathleen found it in 2015, the house had been mostly modernized, and the 880-square-foot basement had been finished, nearly doubling the livable space.

■ THE PROJECT

Heidi and Kathleen hired interior designer Lindsay Chambers to give the house a layered neutral palette, space-conscious furniture, and eye-catching finishes like mosaic marble tile in the kitchen. "With a small home, you're not buying huge quantities, so you can splurge," Heidi says.

CHAIRS

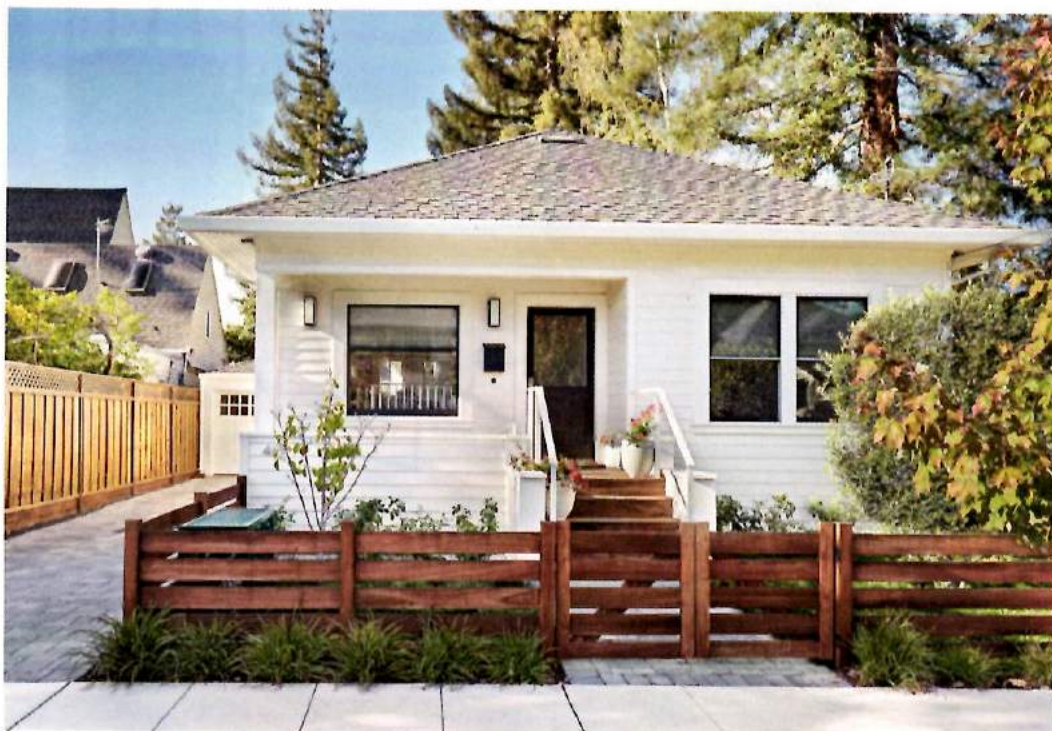
Chambers snagged vintage metal lawn chairs, *left*, from Big Daddy's Antiques in San Francisco and revived them with Rust-Oleum spray-on epoxy paint in gloss black. Open frames don't block sight lines, a small-space bonus.

TABLE

The base of the custom Parsons-style table was painted Black Beauty (Benjamin Moore 2128-10) to complement the industrial-chic chairs. The top's stain matches the dark floor.

ENTRY

A rot-resistant ipe wood fence adds a rustic accent to the facade, *right*. Employed in the tech industry, Heidi and Kathleen were eager to add smart home features, such as a programmable lock system. The front door unlocks when they approach with their phones, and they can program access for friends and dog walkers. "You don't have to give out your key, and you can see when people are coming and going," Heidi says.



CABINETS
 SNOWFALL
 WHITE
 OC-118
 BENJAMIN
 MOORE

KITCHEN WALLS

Because it's visible from the front door, the kitchen, *below*, needed a little drama. That comes courtesy of counter-to-ceiling tiles (Raj by New Ravenna) and a black-framed picture window, which makes the space appear larger. Statuario marble countertops have bold veining like Calacatta marble, but at a fraction of the cost.

CABINETS

The neutral palette from the living and dining areas flows into the kitchen where white upper cabinets brighten gray-stained lowers, *right*. "The stain brings out the richness of the wood and gives the cabinets a high-end look," Chambers says. Deep cubbies keep favorite serving bowls, utensils, and cookbooks in reach.



**V-GROOVE
 PANELING
 ADDS SUBTLE
 TEXTURE.**

“DARK COLORS IN SMALL SPACES FEEL DRAMATIC.”

DESIGNER LINDSAY CHAMBERS



Chambers outfitted an empty corner in the basement with an L-shape desk for two. A mix of open shelving and cabinetry provides pretty and practical storage against charcoal gray walls.

WALL
KENDALL
CHARCOAL
HC-166
BENJAMIN
MOORE

LAUNDRY ROOM

Heidi and Kathleen can stash bulk supplies and extra sheets and towels in the packed-with-storage laundry room, *below*. Clever pullout drawers serve as labeled hampers for sorting lights, darks, towels, and delicates.



MASTER BATH

Hexagonal shower tiles contrast with the veining of the Calacatta marble that covers one wall, the countertop, and floor in the master bath, *right*. The other luxury in this bathroom: natural light, thanks to the clerestory window over the mirror.



IT'S OK TO GO GRAY

More interesting than plain paint or a brown wood finish, cool gray stain looks at once modern and weathered. In a room full of slick surfaces, like a bathroom, "mixing in stained-wood textures makes the space feel more grounded and provides contrast," says interior designer Lindsay Chambers.

1 TRIED AND TRUE

Minwax's tintable Water-Based Wood Stain is easy to use, and its Sea & Sky collection includes several good grays. Try two coats of Slate to mimic the color of this vanity, or Charcoal if you want a slightly darker tone.

Minwax Water-Based Wood Stain, \$12.89/quart;
sherwin-williams.com

2 SOMETHING NEW

Brush on Weathered Wood Accelerator, *right*, and watch your wood rapidly "age" as it dries for 30 minutes. You don't even have to wipe it off.

Varathane Weathered Wood Accelerator, \$10.97/quart;
homedepot.com

